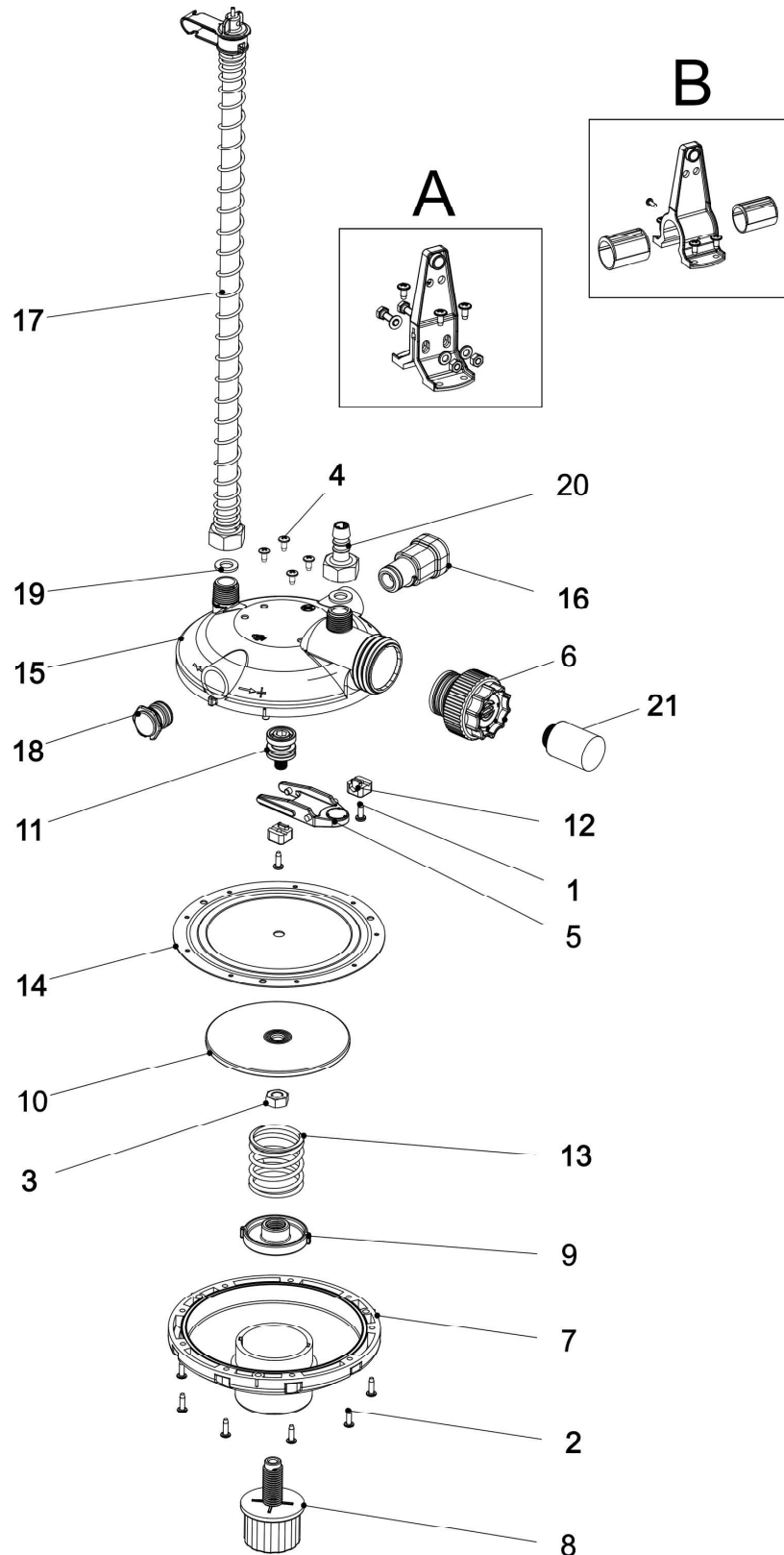


4 Spare parts list pressure regulator Optima E-Flush

Depending on the pressure regulator version that is used, different spare parts might be required. Therefore please choose the appropriate Item No. on the following pages.



Spare parts list pressure regulator Optima E-Flush		
Pos.	Description	Item No.
1	Pan head tapping screw 4,2 x 13	23 80 224
2	Thermoplastic screw 4 x 14	23 98 031
3	Hexagon nut M10	25 15 154
4	Thermoplastic screw 5 x 11	23 98 572
5	Valve lever complete, yellow	030 200 28 00
6	Flush unit E-Flush complete, yellow	030 200 86 00
7	Bottom part, yellow	030 240 21 00
8	Adjustment wheel for pressure regulator, red	030 240 22 00
9	Adjustment nut	030 240 23 00
10	Diaphragm plate	030 240 24 00
11	Lever operation	030 240 25 00
12	Lever collet, yellow	030 240 27 00
13	Pressure spring 3,5 x 41,5 x 45	030 240 33 00
14	Diaphragm	030 240 28 00
15	Upper part for pressure regulator E-Flush, yellow	030 240 65 00
16	Transition piece complete, yellow	-
	- for nipple pipe 22 x 22 mm	3303-00
	- for nipple pipe 28 x 28 mm	3304-00
	- for round pipe ¾"	3305-00
17	- for tube ¾"	3306-00
	Breather unit complete, yellow	-
	- 450 mm	3307-00
18	- 600 mm	3307-6-00
	- 900 mm	3307-9-00
18	Plug complete, yellow	3308-00
19	Washer ½" (10,5 x 19 mm) for internal thread	4215-05
20	Hose connector ½", yellow	4311-00
21	Actuator 24 V DC with 7,5 m cable *	49 06 042
Not illustrated	Protection cap, natural	030 240 41 00

* Not in all versions